



Esbjerg

Facilities Description

- A Semco Maritime head office
- B Production facilities
- C Yard facilities
- D Tampenkaj
- E Doggerkaj



ESBJERG, DENMARK

The yard facilities are located next to the Semco Maritime head office in Esbjerg.

Esbjerg has more than 115.000 inhabitants and is considered the oil capital of Denmark.

The port of Esbjerg is the largest port in Denmark, and numerous yard stays have been accomplished here during the past decade.

The one-stop total refit Semco Maritime facilities in Esbjerg are unique to the Nordic region, and we are always focusing on minimising the downtime of rigs.

The facilities include a loadout capacity of up to 5.000 tons, 4.800 m² of factory space and 15.000 m² of concrete paving.

Table of contents

Travel Access	4
Rig Travel Access	5
Berthing	6
Yard Services	9
Yard Facilities	10
Accommodation and Administration	11
Production Facilities	13
Security and Safety	15

TRAVEL ACCESS

Airports

Esbjerg Airport

- Daily flights to: Aberdeen (BMI) and Stavanger (DAT)
- The airport is located 15 kilometres from the Esbjerg service base
- It takes 15 minutes by taxi to reach the airport from the base (price 250 DKK one way)
- www.esbjerg-lufthavn.dk

Billund International Airport

- Daily Flights to London, Amsterdam and other destinations
- The airport is located 70 kilometres from the Esbjerg service base
- It takes 40-45 minutes by taxi to reach the airport from the base (price 1.000 DKK one way)
- www.billund-airport.dk

Copenhagen International Airport

- International flights to most locations
- The airport is located 300 kilometres from the Esbjerg service base
- It takes 4 hours by taxi to reach the airport from the base (price 5.000 DKK one way)
- It takes 4 hours by train to reach the airport from the Esbjerg railway station (price 450 DKK each way).
Seats can be reserved on at www.dsb.dk
- www.cph.dk

Railway

Esbjerg railway station

- The railway station is located 4 kilometres from the Esbjerg service base
- The railway station has direct connections to Copenhagen and to international railway stations
- It takes 5 minutes by taxi to reach the railway station from the service base
- www.dsb.dk



RIG TRAVEL ACCESS

The yard is accessed through a sheltered channel. The distance from the pilot point to the yard facilities is 8 nautical miles, and it takes approximately 3 hours to operate a rig from the pilot point to the yard.

The calculations below are for illustration purposes only and are based on the approximate location of the vessel, and on an average speed of 5 nautical miles per hour.



BERTHING

Tampenkaj

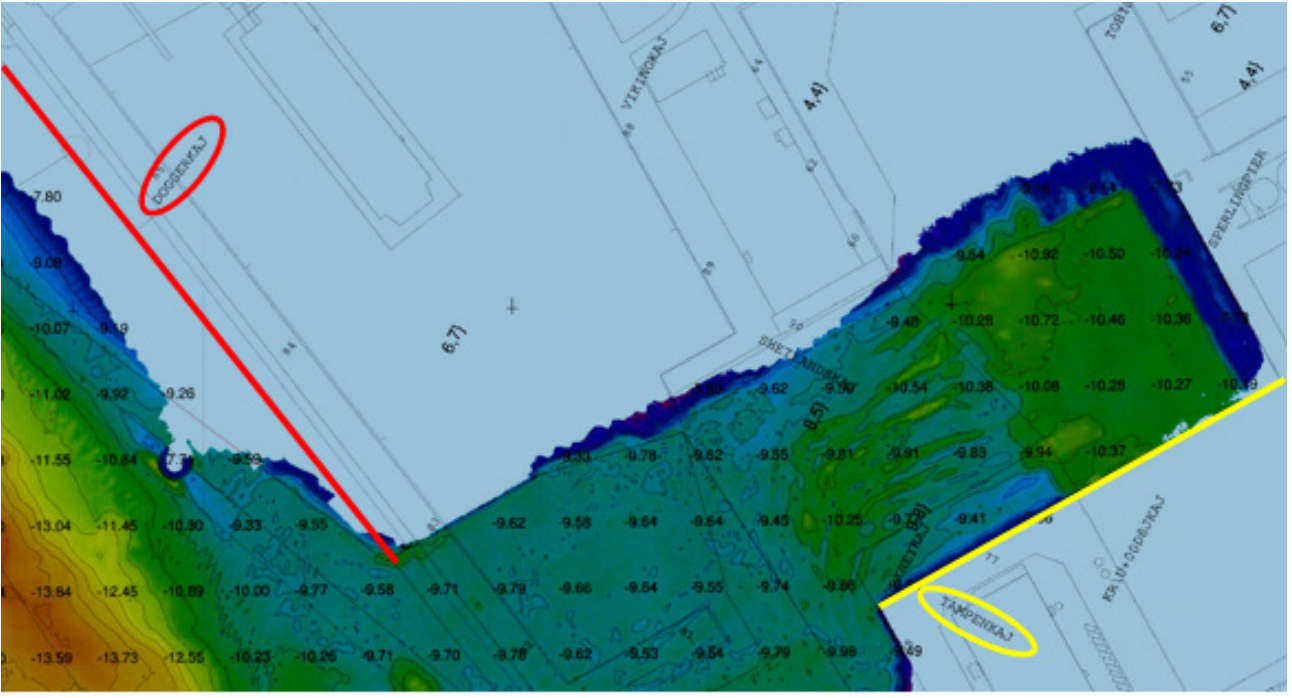
Quay length	200 m
Loadout capacity	5.000 t
Loadout	3 t/m ²
Depth	10,5 m chart data
Tide variation	1,5 - 2,0 m
Quayside height	3,5 m
Opening to quay	127 m
Mooring bollards	15 x 30 t, 2 x 100 t, 2 x 20 t, 5 x 75 t
Water connection	Freshwater
Water supply	4,5 bar (60 m ³ /hour) grid connection
Sewage	Grey/black water tie-ins
Power supply	400 Amp 400 V@ 50Hz grid connection

Doggerkaj

Quay length	270 m
Loadout capacity	60 t>
Loadout	1 t/m ²
Depth CD	9,3 m chart data
Tide variation	1,5 - 2,0 m
Quayside height	3,5 m
Opening to quay	Unrestricted
Mooring bollards	8 x 20 t, 21 x 30 t, 1 x 50 t, 1 x 75 t
Water connection	Freshwater
Water supply	4,5 bar (60 m ³ /hour) grid connection
Sewage	Tank and pump
Power supply	125 Amp 400V @50 Hz grid connection

Soil details

The soil conditions at Tampenkaj and Doggerkaj are well suited for jacking up drilling rigs. Core and cone penetration testing (CPT) generally shows that most quay soils are sandy although gyttja is found in a few test layers. It is believed that the deposits are post-glacial marine deposits. Soil information can be provided for leg penetration analysis prior arrival.





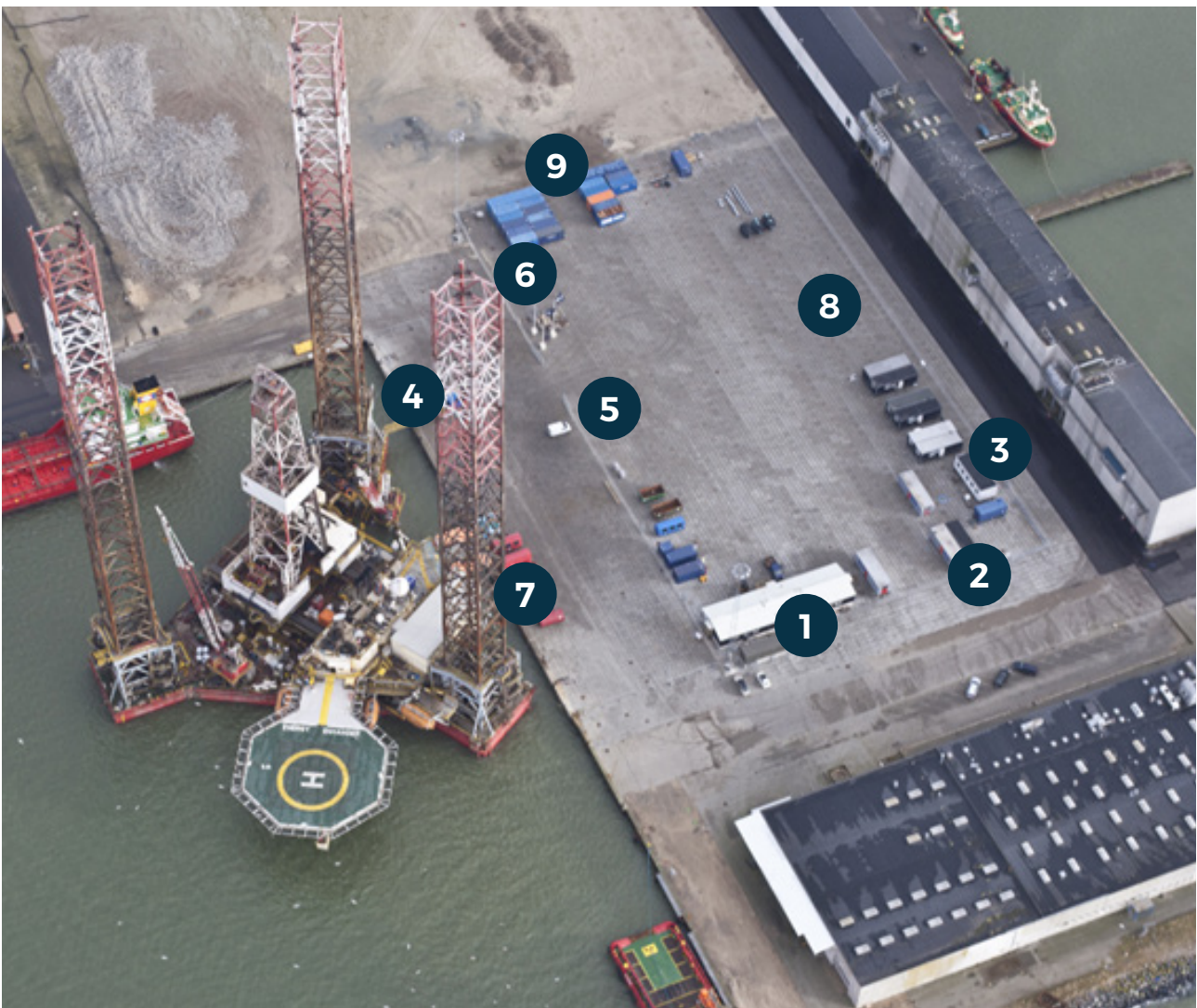
YARD SERVICES

Waste oil handling	Washing station with oil/water separation is available
Outdoor storage	10.000 m ²
Indoor storage	4.500 m ²
Crane capacity	Up to 900 t
Tug assistance	Tugs available
Stair tower	Stationary at quays Scaffolding stair towers can be established
Fenders	Yokohama fenders available: 3 x (length: 5 m ϕ : 2,80 m) 3 x (length: 3,50 ϕ : 2,1 m) 2 x (length: 3 m ϕ : 1,60 m)
POB system	24-hour manned POB access on request
Lighting	Yard lighting available. Further mobile lighting can be provided if needed
Compressed air	Can be provided
Air handling units	Can be provided
Diesel fuel	Can be supplied both at sea and onshore
Workshops	10.500 m ²
Forklifts	Forklift trucks available in all sizes
Floating boom	Available on request
Cherry pickers	Cherry pickers available in different sizes
Working hours	Working is allowed 24/7
Hot work	Yes
Communication	Fibre optic broadband and mobile connectivity



YARD FACILITIES AND SERVICES

1. Office space
2. Changing rooms (40 pax)
3. Laundry container
4. Safety guard, tally system, gangway (project-specific)
5. Garbage area
6. Sewage unit
7. Power distribution
8. Paved area used for: storage, oil spill containers, temporary accommodation, HSE)
9. Storage containers, components stock, utilities stock



ACCOMMODATION AND ADMINISTRATION

Accommodation

An accommodation camp can be established upon request.

- Mess/dining room is available at the yard
- Changing rooms are located close to the quayside
- The parking space on site has the capacity for approximately 200 cars
- The yard management and mail service are in the administration building

Hotel rooms and private accommodation are available in the surrounding area and can be arranged through local agencies.

ECH Park

- The hotel has 63 rooms and is situated 4 km from the yard
- www.ech.dk

Hotel Britannia

- The hotel has 108 rooms and is situated 4 km from the yard
- www.britannia.dk

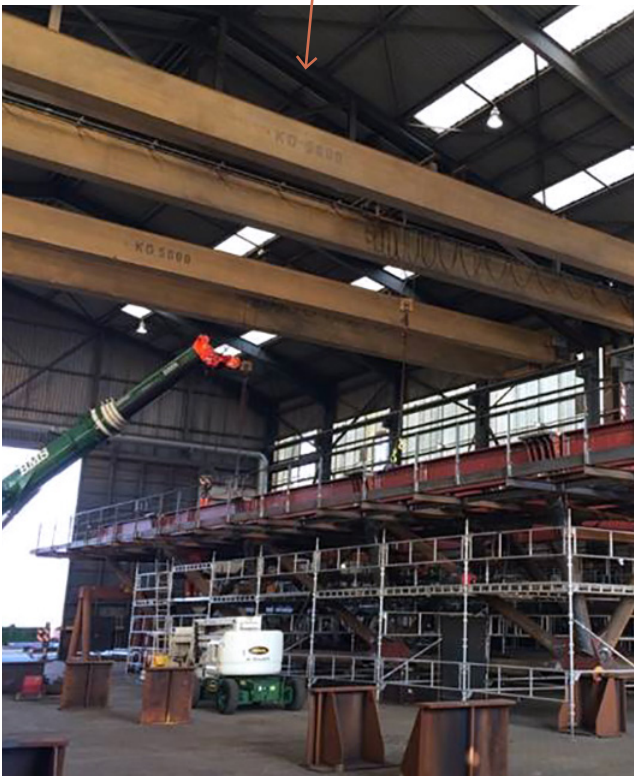
Accommodation Camp

- An accommodation camp can be established on request next to the Tampen kaj Quayside
- Accommodation camp can be made for at least 100 pax

Offices

Offices for any size of project can be set up through a flexible arrangement. The facilities include 15 permanent offices, and a considerable amount of additional offices can be provided close to the relevant project management offices. All offices have meeting rooms and coffee/-tea making facilities. Printers and copying machines can be provided at central locations according to project/client preferences.





Main fabrication, piping, structural, assembly workshop with transverse cranes



Fabrication, piping, structural, assembly workshop

PRODUCTION FACILITIES

Overview of Semco Maritime production facilities at Staget in Esbjerg, Denmark

Fabrication shops:

1. Inside shop

Dimensions: 21,4 x 29,7 m
Gate dimensions: 17,5 x 9,5 m
Crane Lifting Height: 7,8 m
Crane Capacity: 5 t

2. Inside shop

Dimensions: 16,0 x 29,2 m
Gate dimensions: 7,6 x 8,2 m
Crane Lifting Height: 7,5 m
Crane Capacity: 5 t

3. Inside shop

Dimensions: 33,0 x 17,7 m
Gate dimensions: 17,5 x 9,2 m
Crane Lifting Height: 7,4 m
Crane Capacity: 5 t

4. Inside shop

Dimensions: 33,0 x 17,7 m
Gate dimensions: 17,5 x 9,2 m
Crane Lifting Height: 7,6 m
Crane Capacity: 5 t

5. Inside shop

Dimensions: 29,8 x 55,0 m
Gate dimensions: 12,0 x 9,8 m
Crane Lifting Height: 10,3 m
Crane Capacity: 2 x 5 t

6. Inside shop

Dimensions: 33,0 x 17,6 m
Gate dimensions: 6,0 x 4,6 m
Crane Lifting Height: 7,8 m
Crane Capacity: 5 t

7. Warehouse

Storage for consumables
Control of all incoming material

8. Office facilities

Including reception and
offices space for approximately 60 persons

9. Cantina building

Conference room, manpower locker room
and fitness facilities

10. Workshop

Inside dimensions: 25,0 x 8,0 m
Crane capacity: 2 x 3,2 t

11. New workshop for steel cutting

Equipped with KOIKE cutting table,
18,0 x 4,0 m table and 2 x 12,5 t Overhead
cranes.

12. Storage facility

13. Bunker for NDT testing



SECURITY AND SAFETY

Security

Security is maintained through the following systems:

- The yard area is fenced in
- Access to the yard is through the main gate. The gate is remotely operated
- 24-hour manned POB access can be established on request, using an electronic security access system

Safety

- The yard is certified according to ISPS standards
- The fire department frequently inspects the Semco Maritime facilities to ensure that all fire regulations are followed
- Fire extinguishers and fire hoses are located at and around the yard
- The fire department response time is 5 to 10 minutes
- The hospital response time is 5 to 10 minutes





Semco Maritime is certified according to:

- DS/EN ISO 9001:2008 - Quality Management System
- DS/EN ISO 14001:200 - Environmental Management System
- DS/OHSAS 18001: 2008 - Occupational Health Management System ISO
- 3834-2:2005 - Welding Management System
- Achilles JQS - Certificate of Registration
- FPAL - Certificate of Registration
- Sellihca - Certificate of Registration

All certificates can be forwarded upon request.

Office address

Semco Maritime A/S
Esbjerg Brygge 30
DK- 6700 Esbjerg
Tel. +45 7916 6666
semco@semcomaritime.com
www.semcomaritime.com

Yard address

Basin 4, Tampenkaej 3,
DK-6700 Esbjerg

Contact

ringsales@semcomaritime.com

    #SemcoNews